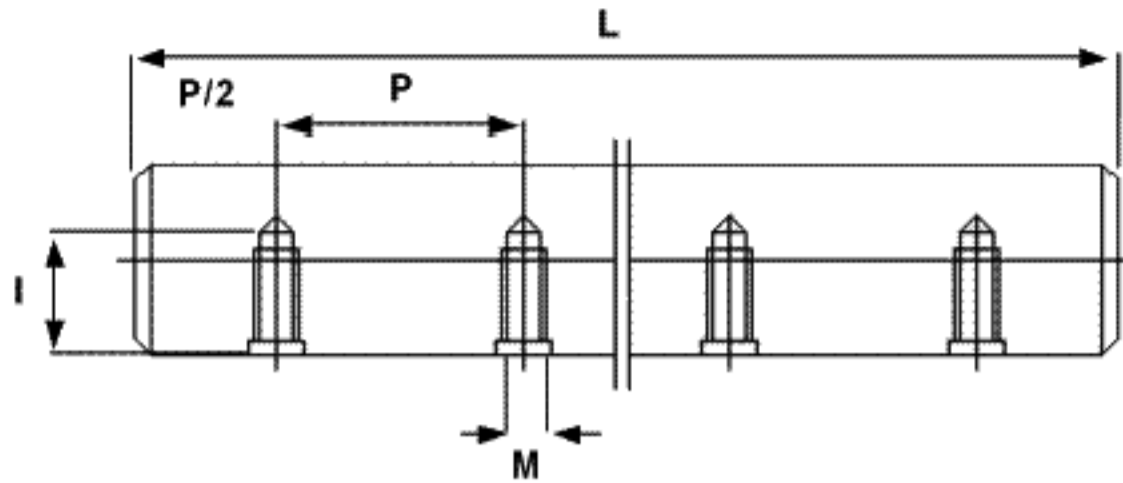


## PRECISION SHAFT

---

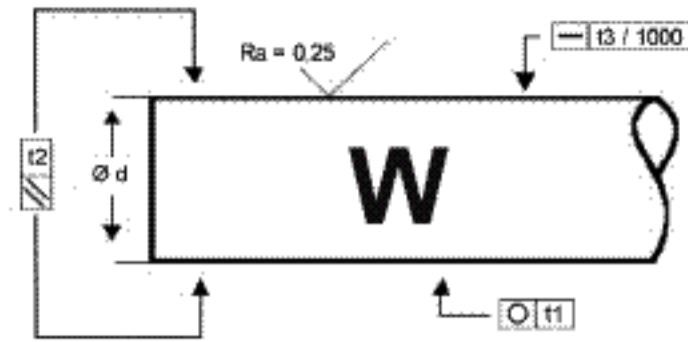
- W - Hardened 62 +/-2Hrc*
- WV - Chrome Plated 62 +/-2Hrc*
- WRA- Stainless Steel 55 +/-2Hrc*
- WRB- Stainless Steel 53 +/-2Hrc*



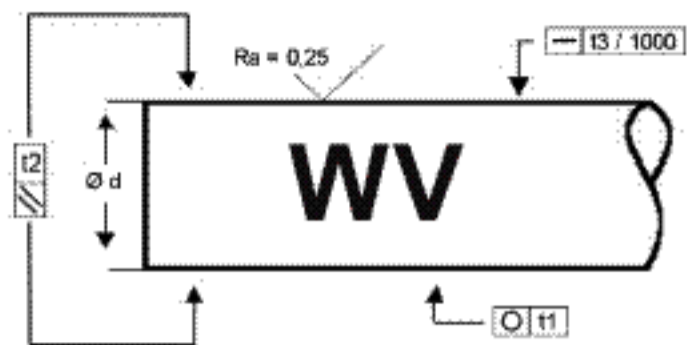


	P	P/2	M	I	
	mm	mm		mm	mm
WB 12 A	75	37.5	M 4	8	6000
WB 12 B	120	60	M 4	8	6000
WB 12 C	150	75	M 4	8	6000
WB 16 A	75	37.5	M 5	9	6000
WB 16 B	100	50	M 5	9	6000
WB 16 C	150	75	M 5	9	6000
WB 20 B	75	37.5	M 6	11	6000
WB 20 C	100	50	M 6	11	6000
WB 20 D	150	75	M 6	11	6000
WB 25 B	75	37.5	M 8	15	6000
WB 25 D	120	60	M 8	15	6000
WB 25 E	150	75	M 6	15	6000
WB 25 F	200	100	M 6	15	6000
WB 30 B	75	37.5	M 10	17	6000
WB 30 C	100	50	M 10	17	6000
WB 30 F	150	75	M 10	15	6000
WB 30 G	200	100	M 8	15	6000
WB 40 A	75	37.5	M 12	21	6000
WB 40 B	100	50	M 12	21	6000
WB 40 C	150	75	M 10	19	6000
WB 40 F	200	100	M 8	17	6000
WB 40 G	300	150	M 8	17	6000
WB 50 B	100	50	M 14	25	6000
WB 50 C	150	75	M 10	22	6000
WB 50 E	200	100	M 10	21	6000
WB 50 H	300	150	M 10	21	6000

**TYPE W**  
Ck55 / Cf53



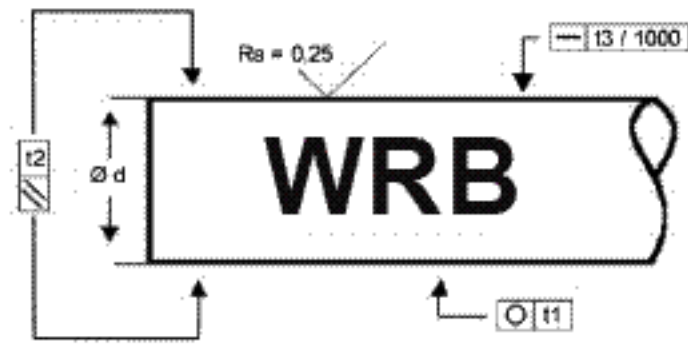
	mm	Kg/M	mm	Tolerance Standard ISO h6 μm	t1 μm	t2 μm	t3 μm
W 4	4	0.10	2100	0 -6	3	4	0.16
W 5	5	0.16	3200	0 -8	4	6	0.16
W 6	6	0.23	6000	0 -8	4	6	0.16
W 8	8	0.40	6000	0 -9	4	6	0.16
W 10	10	0.62	6000	0 -9	4	6	0.12
W 12	12	0.89	6000	0 -11	5	8	0.12
W 14	14	1.21	6000	0 -11	5	8	0.12
W 15	15	1.39	6000	0 -11	5	8	0.12
W 16	16	1.58	6000	0 -11	5	8	0.1
W 18	18	2.00	6000	0 -11	5	8	0.1
W 20	20	2.47	6000	0 -13	6	8	0.1
W 22	22	2.98	6000	0 -13	6	8	0.1
W 24	24	3.55	6000	0 -13	6	8	0.1
W 25	25	3.85	6000	0 -13	6	9	0.1
W 28	28	4.83	6000	0 -13	6	9	0.1
W 30	30	5.55	6000	0 -13	6	9	0.1
W 32	32	6.31	6000	0 -16	7	11	0.1
W 35	35	7.55	6000	0 -16	7	11	0.1
W 40	40	9.87	6000	0 -16	7	11	0.1
W 45	45	12.50	6000	0 -16	7	11	0.1
W 50	50	15.40	6000	0 -16	7	11	0.1
W 55	55	18.64	6000	0 -19	8	13	0.1
W 60	60	22.20	6000	0 -19	8	13	0.1
W 70	70	30.20	6000	0 -19	8	13	0.1
W 80	80	39.50	6000	0 -19	8	13	0.1
W 90	90	49.92	6000	0 -22	8	13	0.2
W 100	100	61.62	6000	0 -22	8	13	0.2



**TYPE WV**  
Ck55 / Cf53

	mm	Kg/M	mm	Tolerance Standard ISO h7 $\mu\text{m}$	t1 $\mu\text{m}$	t2 $\mu\text{m}$	t3 $\mu\text{m}$
WV 6	6	0.23	6000	0 -12	6	10	0.16
WV 8	8	0.40	6000	0 -15	6	10	0.16
WV 10	10	0.62	6000	0 -15	6	10	0.12
WV 12	12	0.89	6000	0 -18	8	12	0.12
WV 14	14	1.21	6000	0 -18	8	12	0.12
WV 15	15	1.39	6000	0 -18	8	12	0.12
WV 16	16	1.58	6000	0 -18	8	12	0.1
WV 18	18	2.00	6000	0 -18	8	12	0.1
WV 20	20	2.47	6000	0 -21	9	12	0.1
WV 25	25	3.85	6000	0 -21	9	12	0.1
WV 28	28	4.83	6000	0 -21	9	12	0.1
WV 30	30	5.55	6000	0 -21	9	12	0.1
WV 32	32	6.31	6000	0 -25	11	15	0.1
WV 35	35	7.55	6000	0 -25	11	15	0.1
WV 40	40	9.87	6000	0 -25	11	15	0.1
WV 45	45	12.50	6000	0 -25	11	15	0.1
WV 50	50	15.40	6000	0 -25	11	15	0.1
WV 55	55	18.64	6000	0 -30	12	15	0.1
WV 60	60	22.20	6000	0 -30	12	15	0.1
WV 70	70	30.20	6000	0 -30	12	15	0.1
WV 80	80	39.50	6000	0 -30	12	15	0.1
WV 90	90	49.92	6000	0 -35	14	17	0.2
WV 100	100	61.62	6000	0 -35	14	17	0.2

Hardness: 62 +/-2HRc  
 Chrome: 900 - 100HV  
 Plating: 5 to 10u

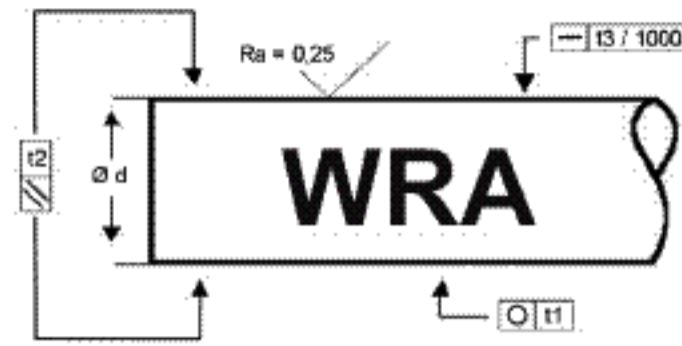


**TYPE WRB**  
X46Cr13 / W 1.4034

	mm	Kg/M	mm	Tolerance Standard ISO h6 $\mu\text{m}$	t1 $\mu\text{m}$	t2 $\mu\text{m}$	t3 $\mu\text{m}$
WRB 6	6	0.23	3100	0 -8	4	6	0.16
WRB 8	8	0.40	6000	0 -9	4	6	0.16
WRB10	10	0.62	6000	0 -9	4	6	0.16
WRB 12	12	0.89	6000	0 -11	5	8	0.12
WRB 14	14	1.21	6000	0 -11	5	8	0.12
WRB 15	15	1.39	6000	0 -11	5	8	0.12
WRB 16	16	1.58	6000	0 -11	5	8	0.12
WRB 20	20	2.47	6000	0 -13	6	9	0.1
WRB 25	25	3.85	6000	0 -13	6	9	0.1
WRB 30	30	5.55	6000	0 -13	6	9	0.1
WRB 40	40	9.87	6000	0 -16	7	11	0.1
WRB 50	50	15.40	6000	0 -16	7	11	0.1
WRB 60	60	22.20	6000	0 -19	8	13	0.1

**Hardness 53Hrc**

**TYPE WRA**  
X90CrMoV18

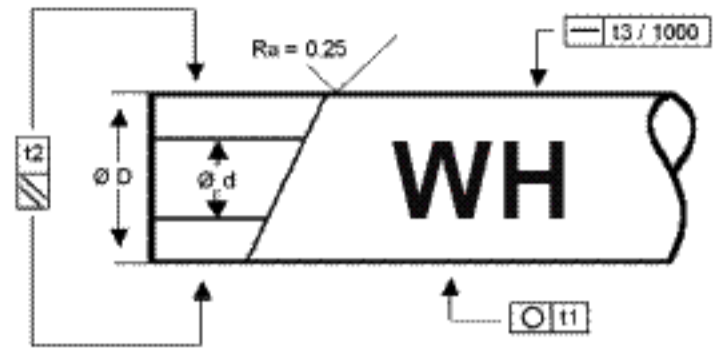


	mm	Kg/M	mm	Tolérance Standard ISO h6 $\mu\text{m}$	t1 $\mu\text{m}$	t2 $\mu\text{m}$	t3 $\mu\text{m}$
<b>WRA 6</b>	6	0.23	3100	0 -8	4	6	0.16
<b>WRA 8</b>	8	0.40	6000	0 -9	4	6	0.16
<b>WRA 10</b>	10	0.62	6000	0 -9	4	6	0.16
<b>WRA 12</b>	12	0.89	6000	0 -11	5	8	0.12
<b>WRA 14</b>	14	1.21	6000	0 -11	5	8	0.12
<b>WRA 15</b>	15	1.39	6000	0 -11	5	8	0.12
<b>WRA 16</b>	16	1.58	6000	0 -11	5	8	0.12
<b>WRA 20</b>	20	2.47	6000	0 -13	6	9	0.1
<b>WRA 25</b>	25	3.85	6000	0 -13	6	9	0.1
<b>WRA 30</b>	30	5.55	6000	0 -13	6	9	0.1
<b>WRA 40</b>	40	9.87	3000	0 -16	7	11	0.1
<b>WRA 50</b>	50	15.40	3000	0 -16	7	11	0.1
<b>WRA 60</b>	60	22.20	3000	0 -19	8	13	0.1

Hardness: 55 +/-2 HRC



**TYPE WH**  
Ck55 / 100Cr6



	D	d (+/-10%)			DIN6773	ISO h6	t1	t2	t3
	mm	mm	Kg/M	mm	mm	$\mu\text{m}$	$\mu\text{m}$	$\mu\text{m}$	$\mu\text{m}$
<b>WH 12</b>	12	4	0.79	3000	0.6 - 1.3	0 - 11	5	8	0.12
<b>WH 16</b>	16	7	1.28	3000	0.6 - 1.6	0 - 11	5	8	0.12
<b>WH 20</b>	20	14	1.25	3000	0.9 - 1.6	0 - 13	6	9	0.1
<b>WH 25</b>	25	15.6	2.35	6000	0.9 - 1.8	0 - 13	6	9	0.1
<b>WH 30</b>	30	18.3	3.5	6000	0.9 - 2.0	0 - 13	6	9	0.1
<b>WH 40</b>	40	28	4.99	6000	1.5 - 2.5	0 - 16	7	11	0.1
<b>WH 50</b>	50	29.7	9.91	6000	1.5 - 3.0	0 - 16	7	11	0.1
<b>WH 60</b>	60	36	14.20	6000	2.2 - 3.0	0 - 19	8	13	0.1
<b>WH 80</b>	80	57	19.43	6000	2.2 - 3.0	0 - 19	8	13	0.1

